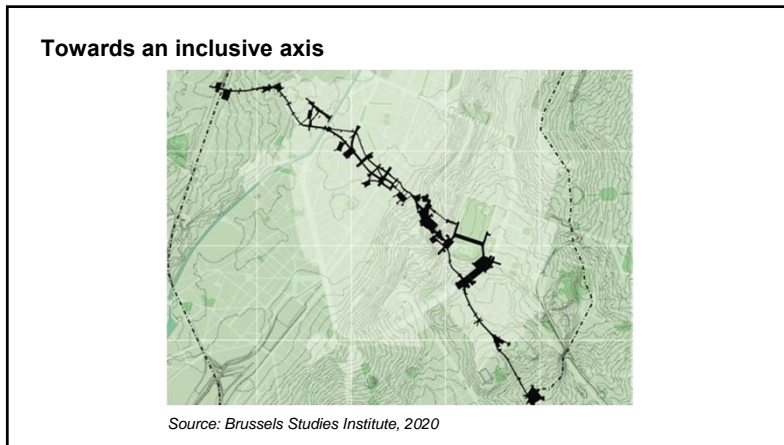


**Initial research proposal**

- A socio-spatial survey of the Steenweg's expanded public realm



**What we've done so far**

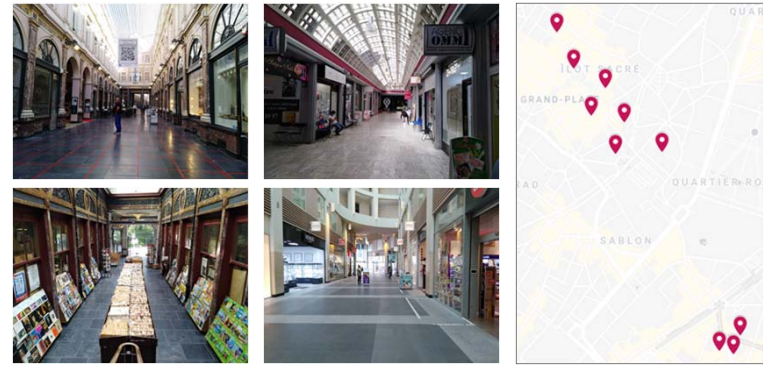
- A survey of the expanded public realm, including undergrounds, galleries, courts, patios, thresholds and leftover spaces
- A Nolli-style map compiling building plans (in progress)
- Focus on commercial galleries

### Compiling a Nolli-style map

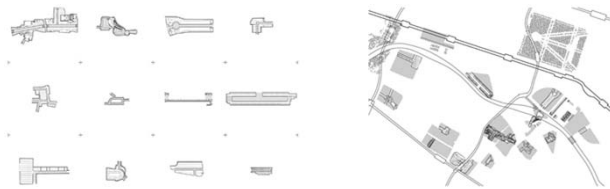


Source: work in progress Pauline Cap, Master student, LOCI

### Commercial galleries



### Commercial galleries

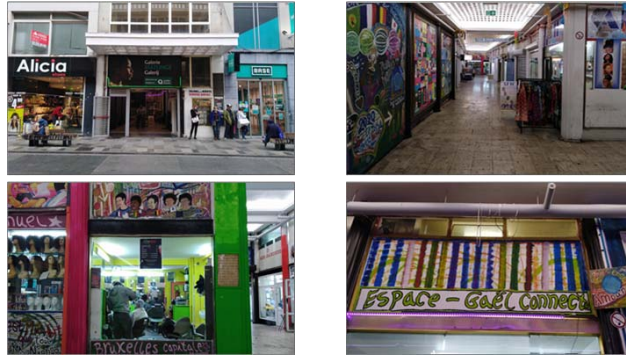


Source: FORTON Killian, SCHOONJANS Tatiene, dessins réalisés dans le cadre de LBARC2201 Atelier d'architecture, LOCI-UCLouvain, 2019

### Galerie Toison D'Or



**Galerie Matonge**

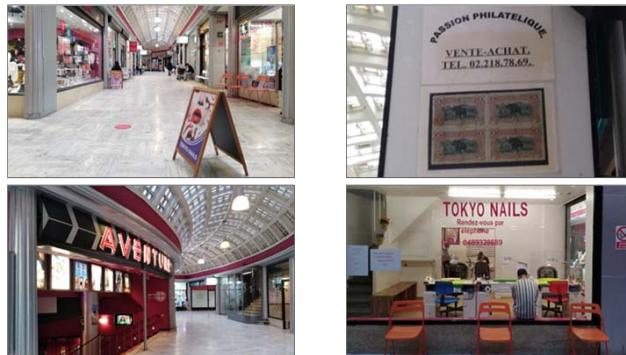


**Interactions in galleries**

*“Il y a des passants qui viennent pour visiter, il y en a qui traversent juste pour sortir sur la Chaussée d'Ixelles. Ils viennent par curiosité. Je n'aime pas l'aspect visite, car ça fait comme s'il y avait des singes enfermés... Il y en a qui font des photos, etc. Personnellement, je n'aime pas”.* Hairdresser in Matonge Gallery

*“J'aime la galerie parce qu'elle rend curieux, par exemple avec les commerces Vietnamiens qui sont tous colorés. Il y a plein de choses à regarder. Les commerçants parlent français quand même et se demandent entre-eux 'Que fais-tu? Cava?' Ca fait une bonne ambiance”.* Nail esthetician in Galerie du Centre

**Galerie du Centre**



**Galleries and inclusion**

Do galleries have the potential to be “inclusive enclaves” (Berger et al. 2017)?



Source: Mural by Gaël, Galerie Matonge

### **Research questions**

Starting from social and spatial observations from within commercial galleries, we aim to draft a framework through which to analyze inclusion along the Steenweg.

In particular :

- how do anchorage and transit dynamics manifest in galleries?
- how are they spatially configured?
- What types of interactions and urbanities do these anchorage and transit dynamics foster?
- what can this analysis tell us about the Steenweg's overall inclusion dynamics?

**Thank you for your attention!**

### **Next steps**

- Continue to collate building plans for Nolli-style map
- Contextualise qualitative data from galleries with literature
- Draft a framework from which to reflect more generally on inclusion along the Steenweg
- Write-up findings in the form of an exploratory article